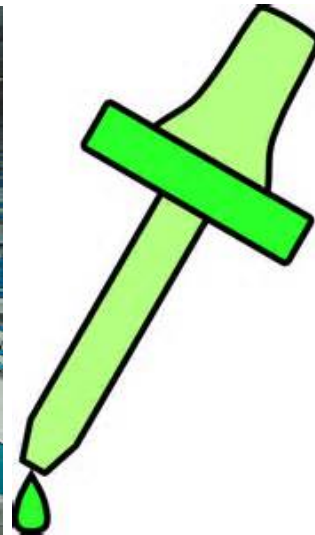
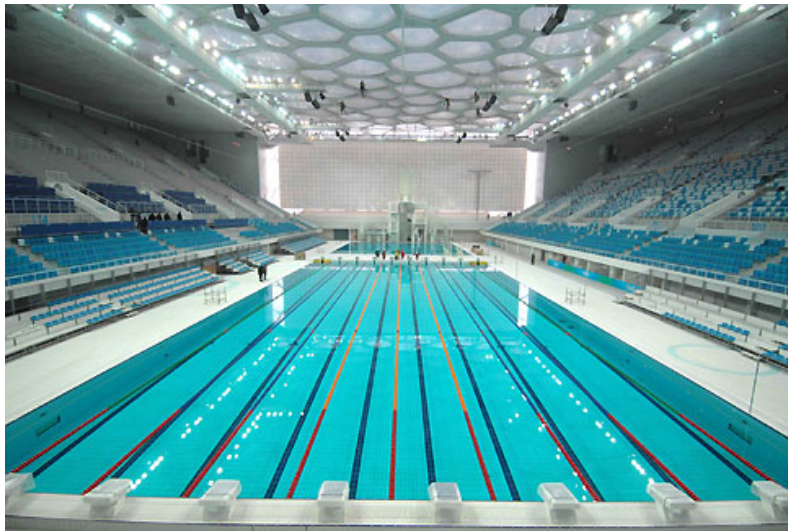


Testing Results for Lead in Drinking Water for Norfolk Naval Shipyard – SAC/Youth Center - Buildings 1497 & 1498

The Navy is committed to maintaining safe drinking water on its installations. City water supplied to the Navy and the Navy's water distribution system is regularly tested and in compliance with the Safe Drinking Water Act. Because lead exposure is a particular concern for children, and lead may be introduced to drinking water through the pipes, fittings, solder, and fixtures inside a building, the EPA recommends, but does not mandate, that we test the lead content of drinking water in priority areas such as youth centers (YC), child development centers (CDC), and child development group homes (CDGH).

Navy environmental personnel conducted lead testing at the Norfolk Naval Shipyard – SAC/Youth Center (YC) – Buildings 1497 and 1498 in accordance with Navy and EPA guidelines. Samples from various locations in the YC were sent to a state-certified laboratory for analysis.

At the Norfolk Naval Shipyard –SAC/YC– Buildings 1497 and 1498, outlets used for drinking and cooking, as well as outlets used for hand washing were tested. **All 14 of the outlets tested were within EPA's recommended lead level of 20 ppb.** One part per billion is equal to one drop of water in an Olympic-size swimming pool.



A copy of all test results is enclosed for your information. The test results are presented in two tables:

- Table 1 **Summary of Results** summarizes the data by category of use (e.g., drinking, cooking, washing).
- Table 2 **Summary Statistics** summarizes all the data.

Table 1 provides a description of each sampling location using three columns; *Category*, *Outlet No.*, and *Outlet Description*. The *Category* column gives information about whether the outlet is used for drinking water (water fountain), cooking (food preparation), or washing (primarily hand-washing). The *Outlet No.* column is the number used to identify each outlet location and

corresponds to the outlet number on the floor plan. The *Outlet Description* column contains additional information to describe the outlet sampled under each category.

The next set of columns in **Table 1** provide *Initial Sampling Results*, and for those locations that exceeded the recommended level of 20 ppb, the *Re-sampling Results*.

EPA sampling protocol requires water to not be used for between 8 and 18 hours prior to first draw sampling. Therefore, the *Initial Sampling Results* include a sub-column for *First Draw* samples collected early in the morning before the YC opened and before any water was used. Additional sub-columns indicate whether *Retesting* is required and the *Date Secured* for fixtures greater than 20 ppb.

The *Re-sampling Results* columns are annotated N/A since all samples at the Norfolk Naval Shipyard – SAC/YC – Buildings 1497 and 1498 were within EPA recommended levels.

The *Corrective Actions* column describes actions that have been taken to remediate the source of lead. In the event that future fixtures or upstream piping is replaced, there are columns for *Post Remediation Sampling* data that will be documented to confirm that these corrective actions were successful in reducing lead below 20 ppb.

To learn more about lead in drinking water schools and day care centers visit this EPA website at: http://water.epa.gov/drink/info/lead/schools_index.cfm.

To learn more about your home's public water supplier, see their annual water quality report: Portsmouth: <http://www.portsmouthva.gov/publicutil/waterqualityreport.aspx>

Navy Water Quality Reports:

http://www.cnmc.navy.mil/regions/cnrma/om/environmental_support/water_quality_information.html

To answer any questions you may have on the sampling program contact the Norfolk Naval Shipyard Public Affairs Officer at **757-396-8122**. If you have any health questions or concerns, we encourage you to call your health care provider or, if you are a TRICARE beneficiary, contact the Regional Nurse Advice Line (1-800-TRICARE, press option 1) or use the Regional Appointment Center at 1-866-645-4584 to schedule an appointment with your primary care provider.

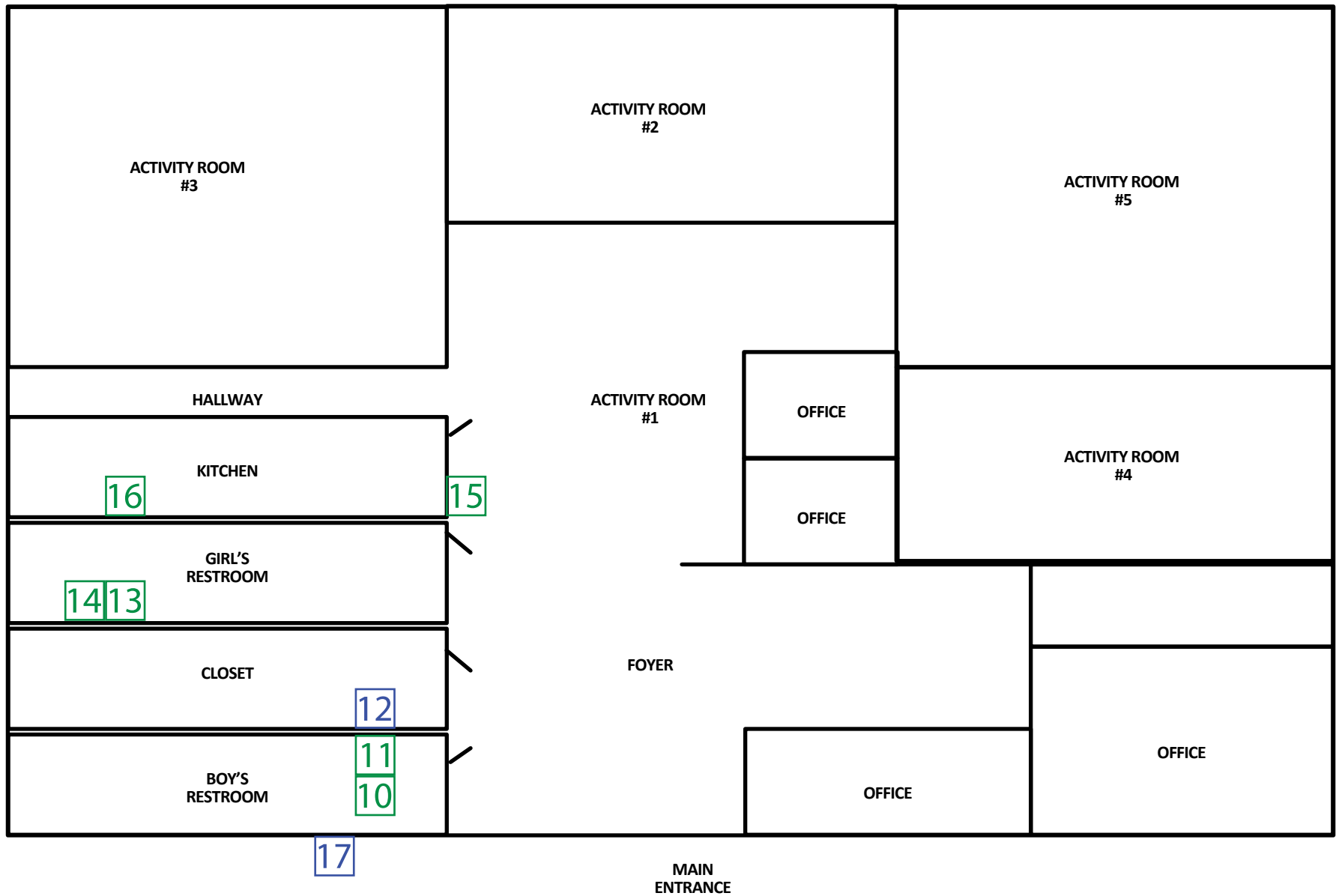
Priority Areas Lead Testing and Corrective Actions (October 2014)
Norfolk Naval Shipyard, SAC/Youth Center, Buildings 1497 and 1498

Table 1. Summary of Results

SAMPLING LOCATION DESCRIPTION			INITIAL SAMPLING RESULTS			RE-SAMPLING RESULTS			CORRECTIVE ACTIONS	POST REMEDIATION SAMPLING RESULTS	
			CATEGORY Water Intended For:	OUTLET NO.	Outlet Description	First Draw (ppb)	Retest required?	Date Fixture Secured?		Recommended Level = 20ppb	
Water Fountain 15 min. Follow up Flush Sample - Collected day before First Draw Sampling (ppb)	First Draw (ppb)	Follow up Flush - Collected 30 seconds after First Draw Sampling (ppb)							Description	First Draw (ppb)	Follow up Flush - Collected 30 seconds after First Draw Sampling (ppb)
SAMPLING DATE			10/17/2014								
RESULTS DATE			10/27/2014								
DRINKING	2	Water fountain (cooler)	non-detect	NO	N/A	N/A	N/A	N/A	N/A	N/A	N/A
DRINKING	6	Water fountain (cooler)	non-detect	NO	N/A	N/A	N/A	N/A	N/A	N/A	N/A
DRINKING	8	Ice maker	non-detect	NO	N/A	N/A	N/A	N/A	N/A	N/A	N/A
DRINKING	15	Water fountain (cooler)	non-detect	NO	N/A	N/A	N/A	N/A	N/A	N/A	N/A
COOKING	7	Building 1498 kitchen sink for dishwashing, food prep	non-detect	NO	N/A	N/A	N/A	N/A	N/A	N/A	N/A
COOKING	16	Building 1497 kitchen sink for dishwashing, food prep	non-detect	NO	N/A	N/A	N/A	N/A	N/A	N/A	N/A
WASHING	1	Men's Restroom hand washing sink	non-detect	NO	N/A	N/A	N/A	N/A	N/A	N/A	N/A
WASHING	4	Women's Restroom hand washing sink	non-detect	NO	N/A	N/A	N/A	N/A	N/A	N/A	N/A
WASHING	5	Women's Restroom hand washing sink	non-detect	NO	N/A	N/A	N/A	N/A	N/A	N/A	N/A
WASHING	9	Activity Room 2 hand washing sink	non-detect	NO	N/A	N/A	N/A	N/A	N/A	N/A	N/A
WASHING	10	Boys' Restroom hand washing sink	non-detect	NO	N/A	N/A	N/A	N/A	N/A	N/A	N/A
WASHING	11	Boys' Restroom hand washing sink	non-detect	NO	N/A	N/A	N/A	N/A	N/A	N/A	N/A
WASHING	13	Girls' Restroom hand washing sink	non-detect	NO	N/A	N/A	N/A	N/A	N/A	N/A	N/A
WASHING	14	Girls' Restroom hand washing sink	non-detect	NO	N/A	N/A	N/A	N/A	N/A	N/A	N/A

Table 2. Summary Statistics

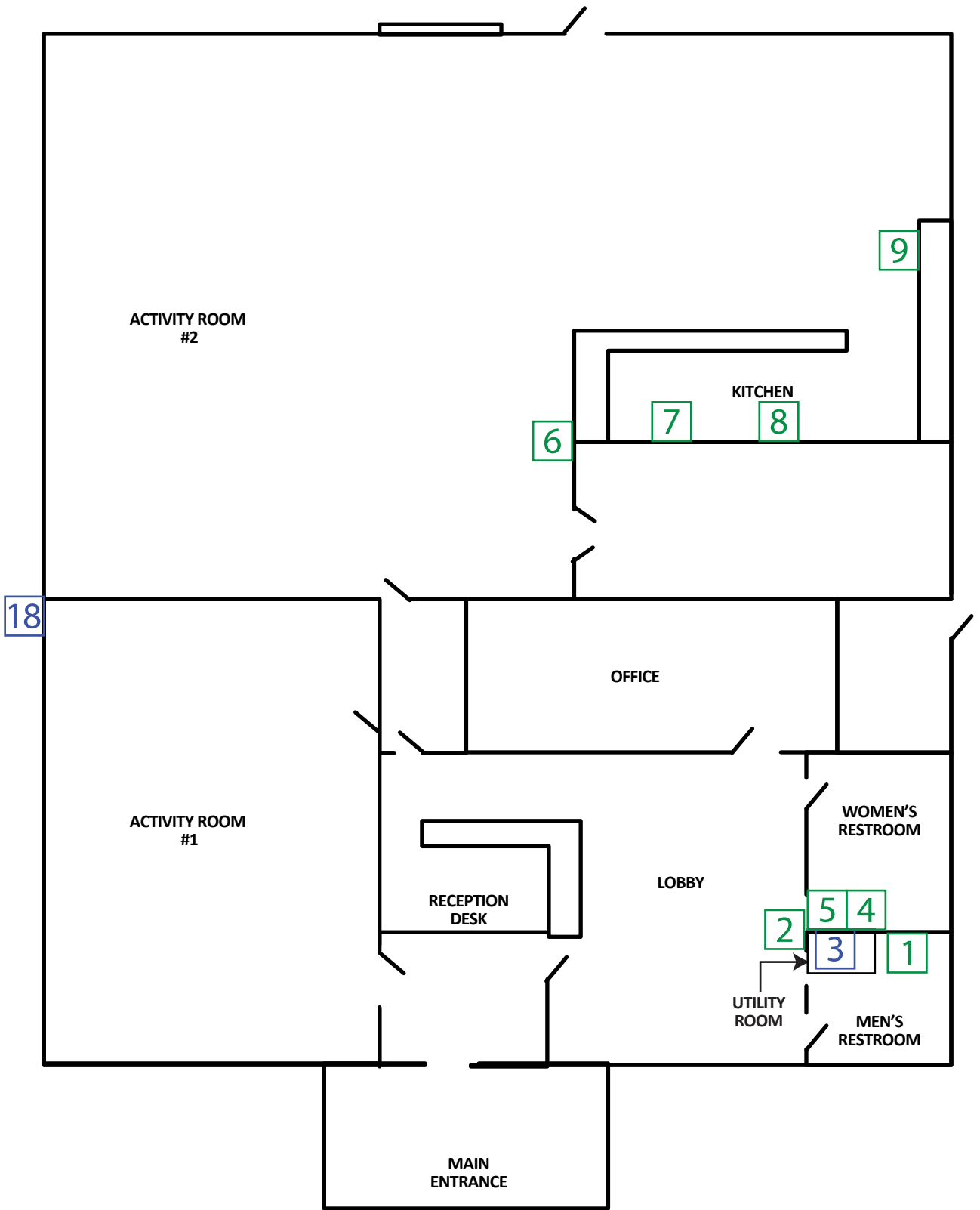
CATEGORY	INITIAL SAMPLING RESULTS		RE-SAMPLING RESULTS			POST REMEDIATION RESULTS
	First Draw	Water Fountain Follow up Flush Sample - Collected day before First Draw Sampling	Recommended Level = 20ppb			First Draw
			First Draw (ppb)	Follow up Flush - Collected 30 seconds after First Draw Sampling	First Draw	
Total Drinking	4	0	0	0	0	0
Total Drinking > 20 ppb	0	0	0	0	0	0
Total Cooking	2	0	0	0	0	0
Total Cooking > 20 ppb	0	0	0	0	0	0
Total Washing/Brushing	8	0	0	0	0	0
Total Washing/Brushing > 20 ppb	0	0	0	0	0	0
Total Samples	14	0	0	0	0	0
Total Samples > 20 ppb	0	0	0	0	0	0



1 BUILDING 1497 - FLOOR PLAN



Outlet numbers pertaining to the floor plan.
 Red = Above 20 ppb
 Green = Below 20 ppb
 Blue = Not Sampled



1 BUILDING 1498 - FLOOR PLAN



Outlet numbers pertaining to the floor plan.
 Red = Above 20 ppb
 Green = Below 20 ppb
 Blue = Not Sampled

No.	Type of Fixture	Location Description	Sampled?	Exceeded?
1	High hand washing faucet	Men's Restroom	Yes	No
2	Water fountain (cooler)	Hallway	Yes	No
3	Utility sink – not for drinking	Utility Room	No	N/A
4	High hand washing faucet	Women's Restroom	Yes	No
5	High hand washing faucet	Women's Restroom	Yes	No
6	Water fountain (cooler)	Activity Room 2	Yes	No
7	Kitchen sink for dishwashing, food prep	Kitchen	Yes	No
8	Ice maker	Kitchen	Yes	No
9	High hand washing faucet	Activity Room 2	Yes	No
10	High hand washing faucet	Boys' Restroom	Yes	No
11	High hand washing faucet	Boys' Restroom	Yes	No
12	Utility sink – not for drinking	Utility Room	No	N/A
13	High hand washing faucet	Girls' Restroom	Yes	No
14	High hand washing faucet	Girls' Restroom	Yes	No
15	Water fountain (cooler)	Hallway	Yes	No
16	Kitchen sink for dishwashing, food prep	Kitchen	Yes	No
17	Hose outlet – not for drinking	Outside	No	N/A
18	Hose outlet – not for drinking	Outside	No	N/A

Outlet numbers pertaining to the floor plan.

Red = Above 20 ppb

Green = Below 20 ppb

Blue = Not Sampled